

U.S. Army Public Health Center

# Army Influenza Activity Report

Week ending 22 February 2020 (week 8)

## Influenza Vaccination Coverage\*

As of 26 February 2020

N/A	DoD
95%	Army Active Duty
88%	Army Guard
83%	Army Reserve

\*Data Source: MEDPROS, ASIMS, MRRS

## SUMMARY

During week 8, 5,705 specimens were submitted for testing, which represents a 22% decrease from week 7. Influenza A represented the majority (71%) of positive specimens submitted for testing. At 26%, PHC-E had the highest percentage of positive specimens for influenza A compared to other regions. However, PHC-C accounted for the greatest number of positive influenza A specimens (n=385). Seventy-six percent of positive influenza A specimens were from non-AD beneficiaries. Beneficiaries younger than 18 years old comprised the majority (n=600) of total positive respiratory specimens, and was followed by individuals 18 to 29 years of age (n=158). Nine influenza-associated hospitalizations were reported in week 8.

## GEOGRAPHIC SPREAD

Click to enlarge image

A Weekly Influenza Surveillance Report Prepared by the Influenza Division  
Weekly Influenza Activity Estimates Reported by State and Territorial Epidemiologists\*  
Week Ending Feb 22, 2020 - Week 8

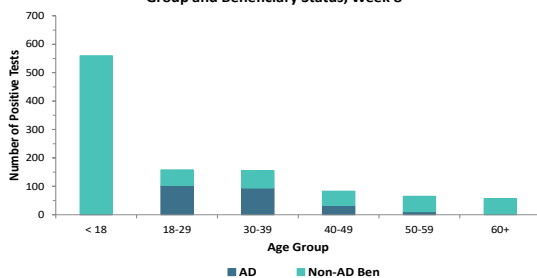


\*This map indicates geographic spread and does not measure the severity of influenza activity.

In week 8, widespread activity was reported in Puerto Rico and 48 states. Regional activity was reported in Oregon. Local activity was reported in the District of Columbia and Hawaii. Sporadic activity was reported in the U.S. Virgin Island, and Guam did not report.

## DEMOGRAPHICS

Positive Respiratory Specimen Results from Army MTFs by Age Group and Beneficiary Status, Week 8

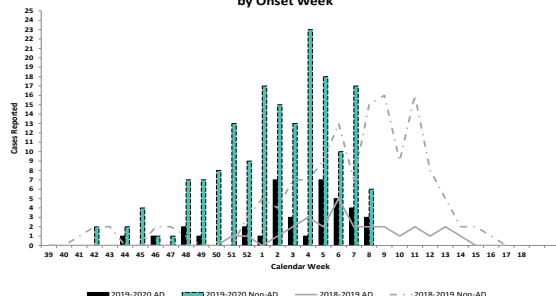


**AD:** In week 8, 243 positive respiratory specimens from Active Duty (AD) Service Members (SM) were submitted. The majority of positive specimens were among those 18 to 29 years of age (n=104, 43%) and was followed by those 30 to 39 years of age (n=94, 39%).

**Non-AD:** The majority of positive respiratory specimens among non-Active Duty beneficiaries were collected from individuals younger than 18 years of age (n=559, 67%).

## INFLUENZA-ASSOCIATED HOSPITALIZATIONS

Army Influenza-Associated Hospitalizations Reported in DRSi by Onset Week



So far this season, 211 hospitalizations have been reported to the DRSi; this is more than double the 99 hospitalizations reported last season during the same period. As of 25 February, 9 influenza-associated hospitalizations with onset dates in week 8 were reported to the DRSi. During week 8 of the 2018-2019 influenza season, 17 hospitalizations were reported.

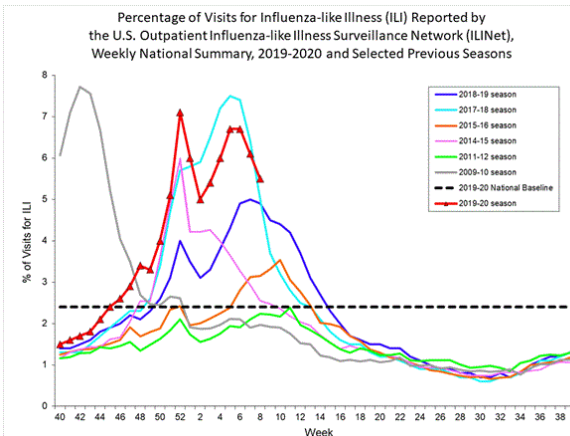
\*DRSi does not capture cases older than 65 years old for influenza-associated hospitalizations.

**Additional Resources:** [APHC Influenza Reports](#), [Centers for Disease Control](#), [Disease Reporting System internet](#), [ESSENCE](#)

**Key:** ILI-Influenza-Like Illness; DRSi- Disease Reporting System Internet; ADV-Adenovirus; RSV-Respiratory Syncytial Virus; SM-Service Member; MEDPROS- Medical Protection System; ASIMS- Aeromedical Services Information Management System; MRRS- Medical Readiness Reporting System

**Questions?**  
[Email APHC DEP](#)  
410-436-7605

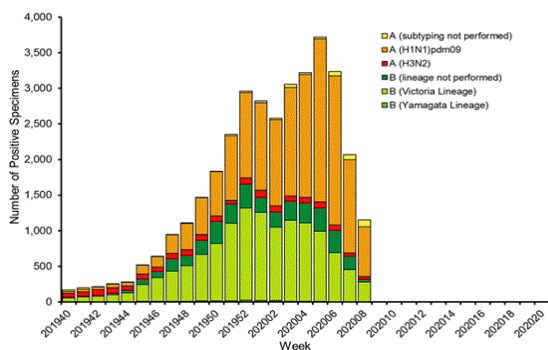
## ILI ACTIVITY - UNITED STATES



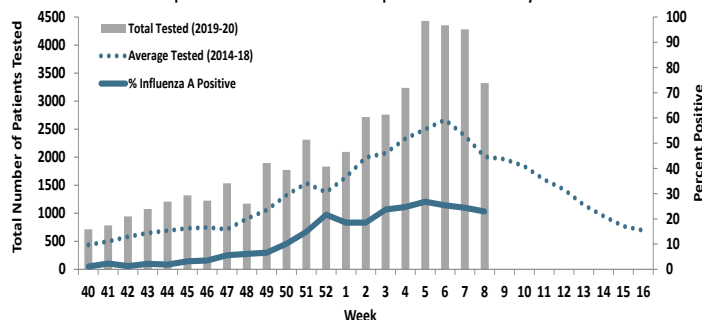
Nationwide in week 8, 5.5% of patient visits reported through the U.S. Outpatient Influenza-like Illness Surveillance Network were due to influenza-like illness. This is above the national baseline of 2.4%. Regionally, the percentage of outpatient visits for ILI ranged from 3.6% to 8.8%. All regions reported a percentage of outpatient visits for ILI above their region-specific baselines.

## LABORATORY RESPIRATORY SPECIMEN TESTING

Influenza Positive Tests Reported to CDC by U.S. Public Health Laboratories, National Summary, 2019-2020 Season



Proportion of Positive Influenza A Specimens for U.S. Army 2019-2020



Nationwide, 1,783 specimens were submitted to CDC in week 8, of which 65% (n=1,153) were positive. Influenza A accounted for 72.4% (n=835) of the total positive specimens submitted to the CDC in week 8, while influenza B accounted for 27.6% (n=318). In the Army population, 22.9% of 3,322 specimens tested for influenza A were positive, which is above the historical average (2013-2014 season - 2018-2019 season) of 19.9% for week 8.

		Week 5	Week 6	Week 7	Week 8	Season Total
Test Types Among Positive Influenza A Specimens	RAT	790	808	826	605	4929
	Culture	26	7	5	2	111
	PCR	372	289	215	153	2778
Army MTF Laboratory Results, 2019-20	Influenza A	1188	1104	1046	760	7818
	Influenza B	535	456	397	275	5519
	Adenovirus	19	11	8	6	218
	Enterovirus	0	0	0	0	7
	Parainfluenza	6	2	2	0	210
	RSV	85	66	64	37	1555
	Negative	6101	5846	5768	4627	75315
	<b>Total</b>	<b>7934</b>	<b>7485</b>	<b>7285</b>	<b>5705</b>	<b>90642</b>

There were 5,705 respiratory specimens tested in week 8, and 18.9% (n=1,078) were positive for any type of respiratory illness. Influenza A accounted for the majority of positive results in week 8 (70.5%, n=760), and influenza B accounted for 25.5% (n=275). Approximately 4% of specimens were positive for other respiratory illnesses: RSV (3.4%) and adenovirus (0.6%)

Rapid antigen tests represented 79.6% of positive influenza A tests, followed by PCR tests (20.1%), and cultures (0.3%).

**Locations providing week 8 laboratory data as of 27 February 2020:** Ft. Belvoir, Ft. Benning, Ft. Bliss, Ft. Bragg, Ft. Campbell, Ft. Carson, Ft. Drum, Ft. Gordon, Ft. Hood, Ft. Huachuca, Ft. Irwin, Ft. Jackson, Ft. Knox, Ft. Leavenworth, Ft. Lee, Ft. Leonard Wood, Ft. Polk, Ft. Riley, Ft. Rucker, Ft. Sam Houston, Ft. Sill, Ft. Stewart, Ft. Wainwright, Korea, Landstuhl Regional Medical Center, Redstone Arsenal, Tripler Army Medical Center, the US Military Academy, and the Walter Reed National Military Medical Center.

\*NOTE: Madigan AMC data is also received weekly, but cannot be included at this time due to reporting limitations from MHS Genesis.

## LABORATORY RESPIRATORY SPECIMEN TESTING

Region	Installation	Influenza A			Influenza B			Adenovirus		
		No. Tested	% Positive	Baseline % Positive	No. Tested	% Positive	Baseline % Positive	No. Tested	% Positive	Baseline % Positive
PHCA	Ft. Belvoir	408	22.1	31.2	226	13.3	0.5	81	2.5	8.1
	Ft. Benning	194	14.9	16.3	192	3.6	0.8			
	Ft. Bragg	306	25.2	39.4			100			
	Ft. Campbell	213	20.2	24	213	9.9	0			100
	Ft. Drum	17	11.8	60	6	100	100			
	Ft. Eustis			36.5			100			
	Ft. Gordon	99	23.2	19.5	98	4.1	0			100
	Ft. Jackson	107	6.5	23	107	16.8	1.4			
	Ft. Knox	11	9.1	21.4	11	0	3.6			
	Ft. Lee	35	8.6	21.3	2	100	100			
	Ft. Meade			0						
	Ft. Rucker	16	18.8	44.4	16	0	0			
	Ft. Stewart	93	15.1	25.7	92	3.3	0			
	Redstone Arsenal			12.5			2.7			
U.S. Military Academy	118	28	48.2			1.5			100	
PHCC	Ft. Bliss	294	20.1	22.8	34	76.5	0.4			7.3
	Ft. Carson	148	31.1	29.3			100			
	Ft. Hood	260	20.8	26.8	244	1.2	0	26	7.7	5
	Ft. Huachuca	57	14	16.7	61	16.4	0			
	Ft. Irwin	49	18.4	3.3	48	0	0			
	Ft. Leavenworth	30	30	30	30	13.3	0			
	Ft. Leonard Wood	231	21.2	42	232	18.1	0			100
	Ft. Polk	110	33.6	14.6	6	100	100			
	Ft. Riley	229	14.4	24.8	231	22.5	3.2			
	Ft. Sam Houston	234	21.4	30.4	238	3.4	1.2			100
	Ft. Sill	109	28.4	37.8	12	100	100			
PHCE	Landstuhl Regional Medical Center	20	15	28.9	17	5.9	0	17	11.8	1.9
PHCP	Ft. Wainwright	74	9.5	43.6	74	16.2	0			
	Korea	33	9.1	28.6	5	0	2.4	5	0	2.4
	Tripler Army Medical Center	118	31.4	16.7	118	6.8	0	11	0	0
Region	Installation	Enterovirus			Parainfluenza			RSV		
		No. Tested	% Positive	Baseline % Pos.	No. Tested	% Positive	Baseline % Pos.	No. Tested	% Positive	Baseline % Pos.
PHCA	Ft. Belvoir				83	0	3.4	226	4	7.4
	Ft. Campbell						100			100
	Ft. Drum									0
	Ft. Gordon						100			100
	Ft. Stewart							10	0	14.3
	U.S. Military Academy						100			100
PHCC	Ft. Bliss							14	7.1	7.7
	Ft. Carson							14	21.4	28.2
	Ft. Hood				26	0	4.8	72	2.8	5.9
	Ft. Leavenworth							2	0	0
	Ft. Leonard Wood						100			
	Ft. Polk							10	0	0
	Ft. Riley							42	9.5	6.9
	Ft. Sam Houston						100			100
	Ft. Sill						2	0	0	
PHCE	Landstuhl Regional Medical Center				17	0	2.7	26	19.2	16
PHCP	Ft. Wainwright							74	16.2	7.8
	Korea			0	5	0	0	6	16.7	7.3
	Tripler Army Medical Center	11	0	0	11	0	0			100

No.: Number of specimens tested during MMWR week 8 2020.

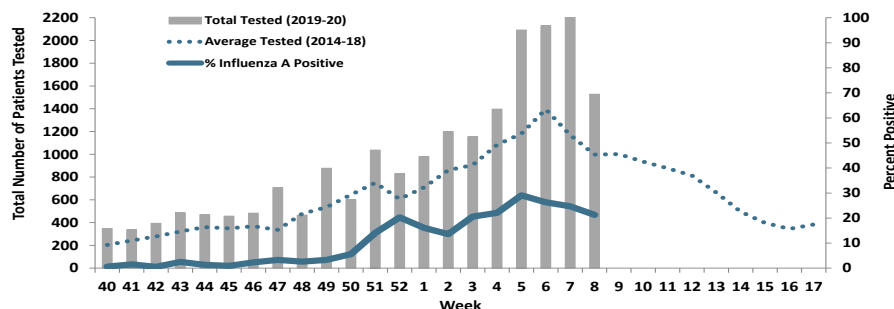
% Pos.: Percentage of positive specimens reported during MMWR week 8 2020.

Baseline % Pos.: Percentage of positive specimens reported in MMWR week 8 during influenza seasons from September 2012 - May 2019.

Missing values indicate that specimens were not tested for the disease during the week of interest.

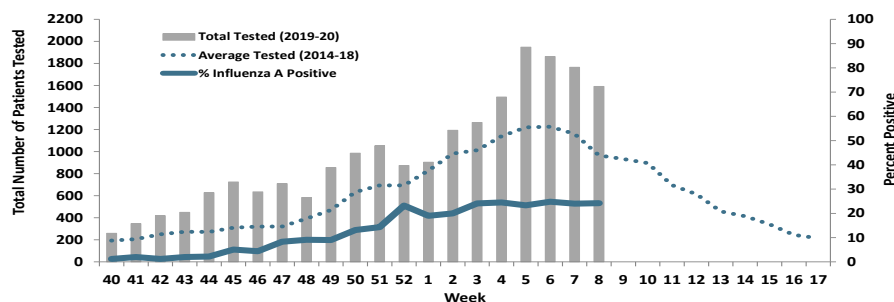
## Proportion of Influenza A Positive Specimens by Week and Region, Army Medical Laboratories, 2019-2020 as Compared to 2014-2018

### Public Health Command - Atlantic (PHC-A)



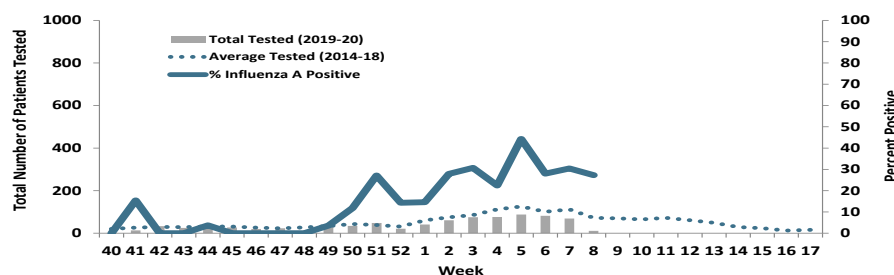
Week 8			
Age Group	AD	Non-AD Ben	Season Total
< 18	0	126	1482
18-29	38	21	540
30-39	41	19	457
40-49	10	20	403
50-59	8	23	291
60+	0	19	200
<b>Total</b>	<b>97</b>	<b>228</b>	<b>3373</b>

### Public Health Command - Central (PHC-C)



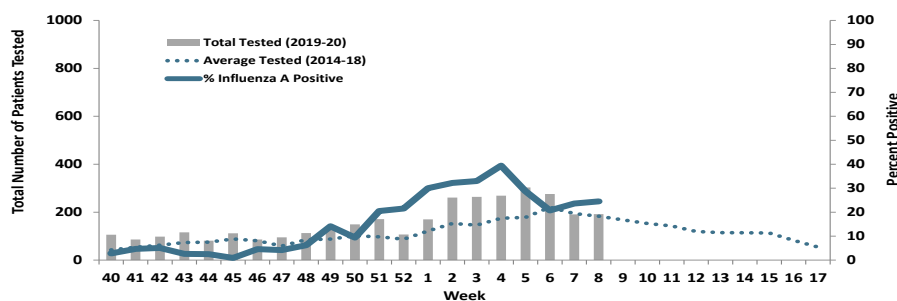
Week 8			
Age Group	AD	Non-AD Ben	Season Total
< 18	1	200	1662
18-29	21	13	408
30-39	33	20	538
40-49	17	23	403
50-59	2	27	304
60+	0	28	267
<b>Total</b>	<b>74</b>	<b>311</b>	<b>3582</b>

### Public Health Command - Europe (PHC-E)



Week 8			
Age Group	AD	Non-AD Ben	Season Total
< 18	0	2	62
18-29	1	0	26
30-39	0	0	37
40-49	0	0	25
50-59	0	0	16
60+	0	0	7
<b>Total</b>	<b>1</b>	<b>2</b>	<b>173</b>

### Public Health Command - Pacific (PHC-P)



Week 8			
Age Group	AD	Non-AD Ben	Season Total
< 18	0	12	205
18-29	2	4	169
30-39	7	10	158
40-49	4	3	84
50-59	1	0	44
60+	0	4	28
<b>Total</b>	<b>14</b>	<b>33</b>	<b>688</b>

### Number of Positive Influenza A Specimens by Duty Status and Public Health Command

Region	Week 1		Week 2		Week 3		Week 4		Week 5		Week 6		Week 7		Week 8	
	AD	Non-AD	AD	Non-AD	AD	Non-AD	AD	Non-AD	AD	Non-AD	AD	Non-AD	AD	Non-AD	AD	Non-AD
PHC-A	29	129	44	119	49	189	64	245	201	407	198	362	145	412	97	228
PHC-C	25	147	74	165	73	232	85	282	102	352	122	340	88	335	74	311
PHC-E	3	3	7	10	9	14	9	8	16	23	6	17	7	14	1	2
PHC-P	14	37	54	30	49	38	51	55	32	55	16	41	6	39	14	33
CENTCOM	-	-	-	-	-	-	-	-	-	-	2	-	-	-	-	-

# A Weekly Influenza Surveillance Report Prepared by the Influenza Division

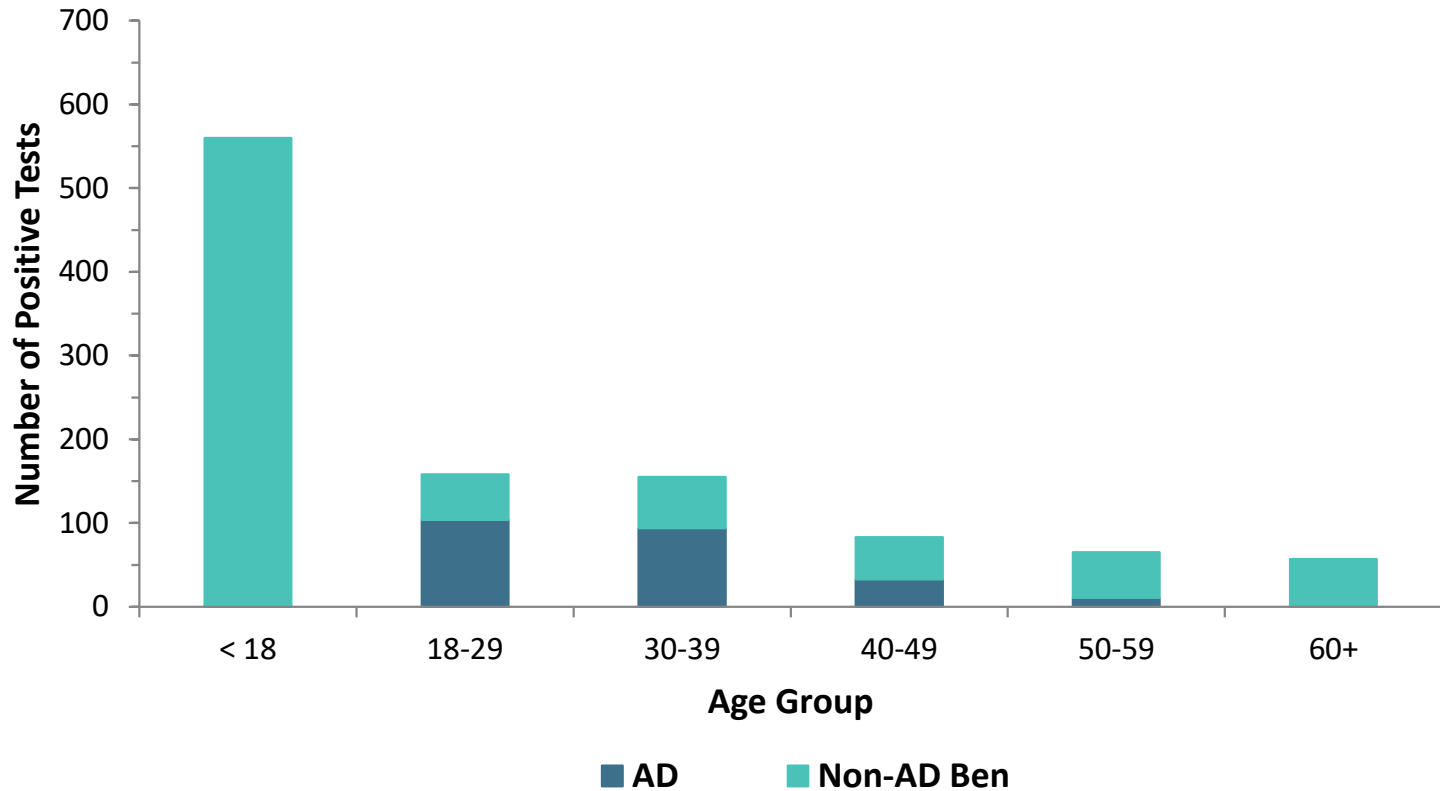
Weekly Influenza Activity Estimates Reported by State and Territorial Epidemiologists\*

Week Ending Feb 22, 2020 - Week 8



\*This map indicates geographic spread and does not measure the severity of influenza activity.

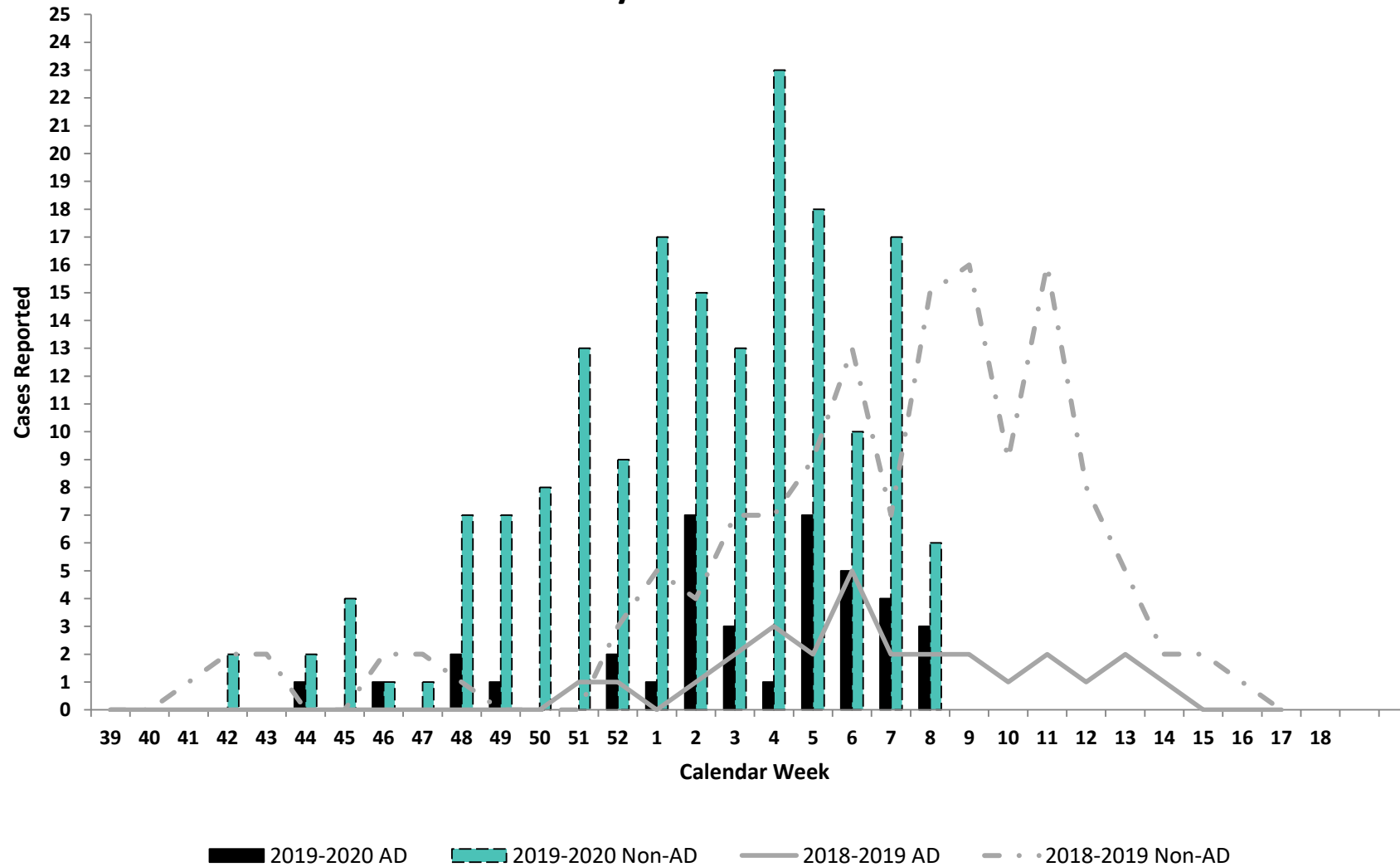
**Positive Respiratory Specimen Results from Army MTFs by Age Group and Beneficiary Status, Week 8**



<b>Week 8</b>			
<b>Age Group</b>	<b>AD</b>	<b>Non-AD Ben</b>	<b>Season Total</b>
< 18	1	559	<b>8387</b>
18-29	104	54	<b>2530</b>
30-39	94	61	<b>1836</b>
40-49	33	50	<b>1051</b>
50-59	11	54	<b>799</b>
60+	0	57	<b>724</b>
<b>Total</b>	<b>243</b>	<b>835</b>	<b>15327</b>

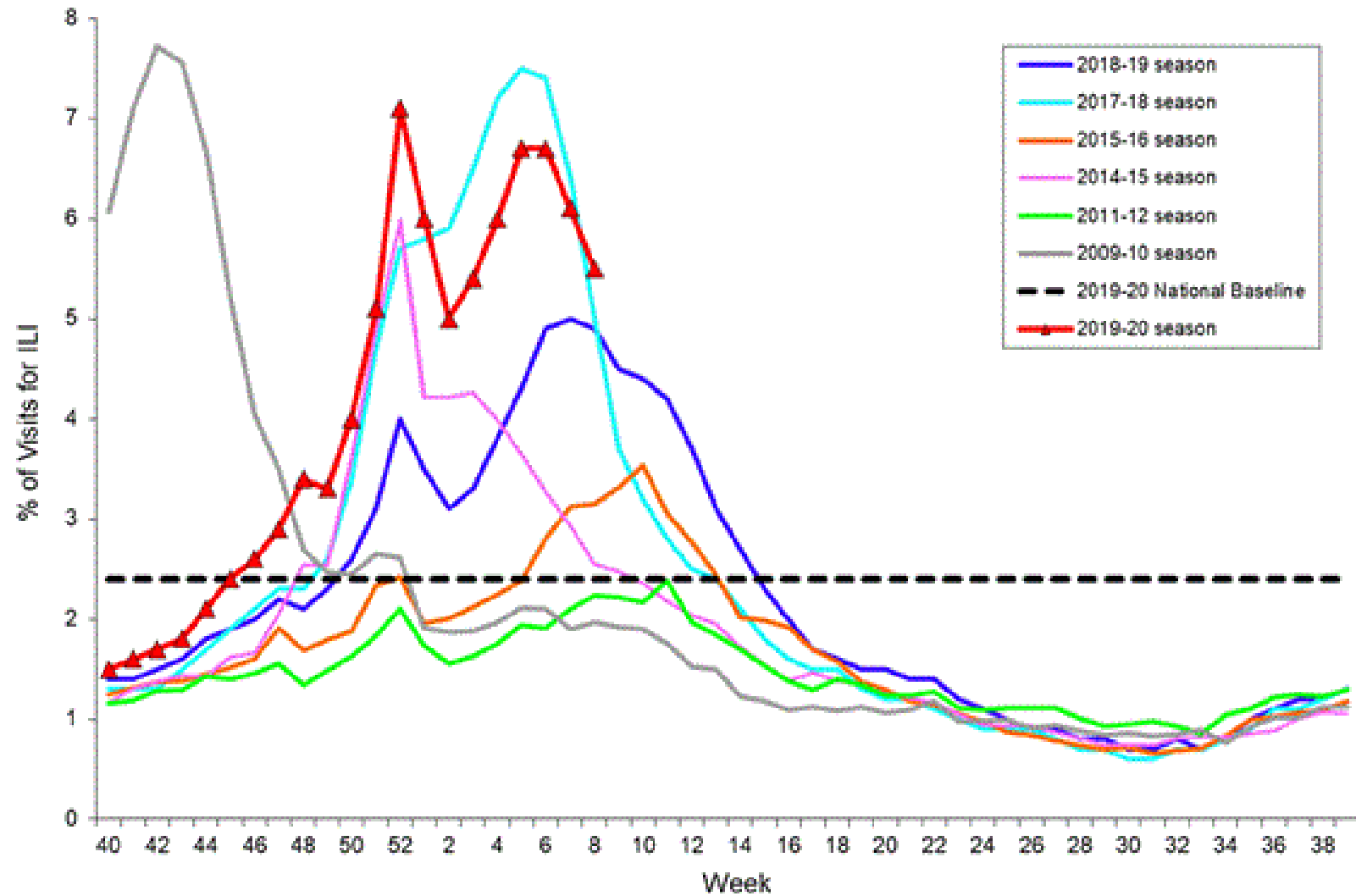


# Army Influenza-Associated Hospitalizations Reported in DRSi by Onset Week



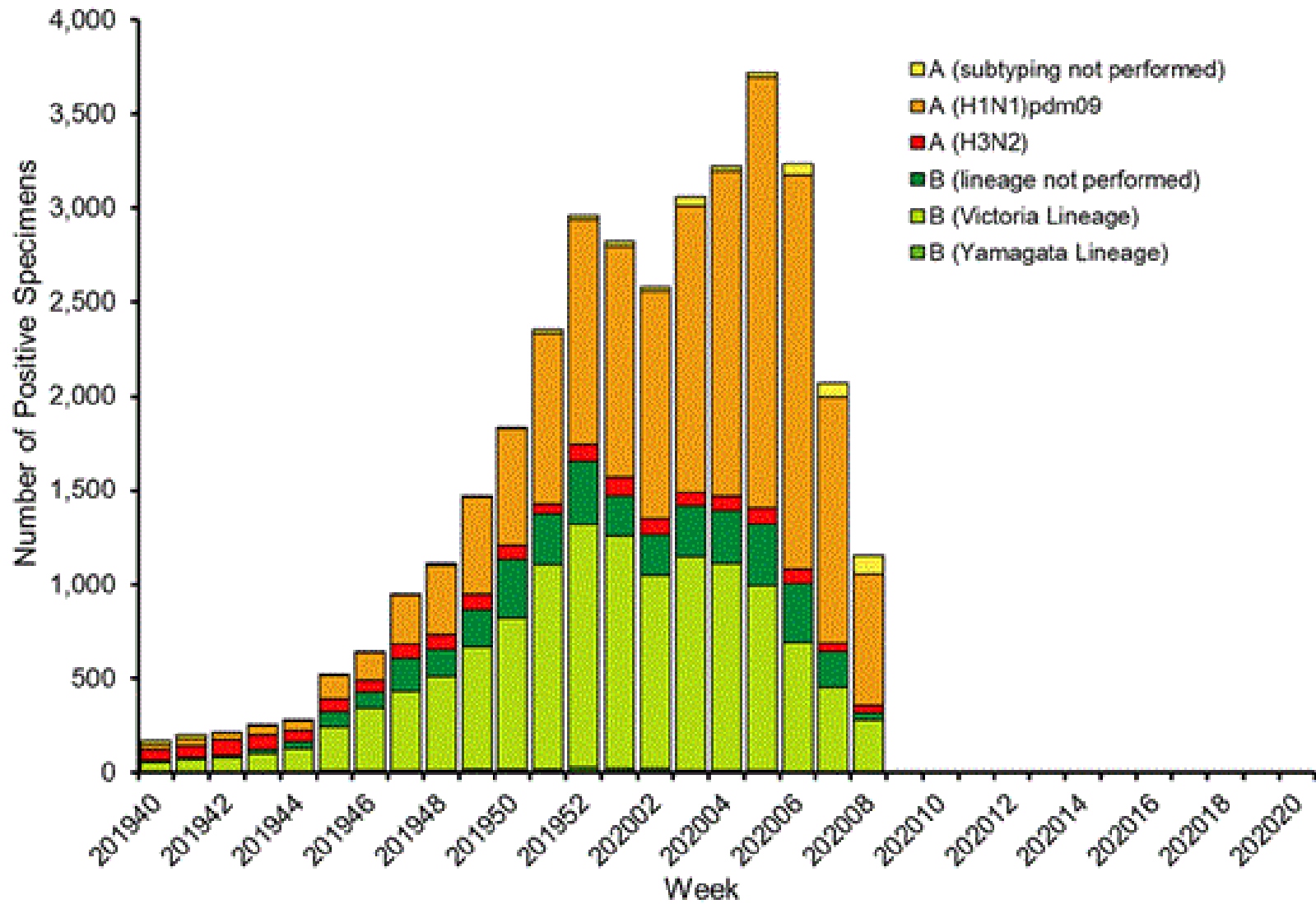
**Note:** Reportable influenza cases are defined as only cases that have been hospitalized and are under the age of 65.  
Data as of 25 February 2020.

Percentage of Visits for Influenza-like Illness (ILI) Reported by the U.S. Outpatient Influenza-like Illness Surveillance Network (ILINet), Weekly National Summary, 2019-2020 and Selected Previous Seasons

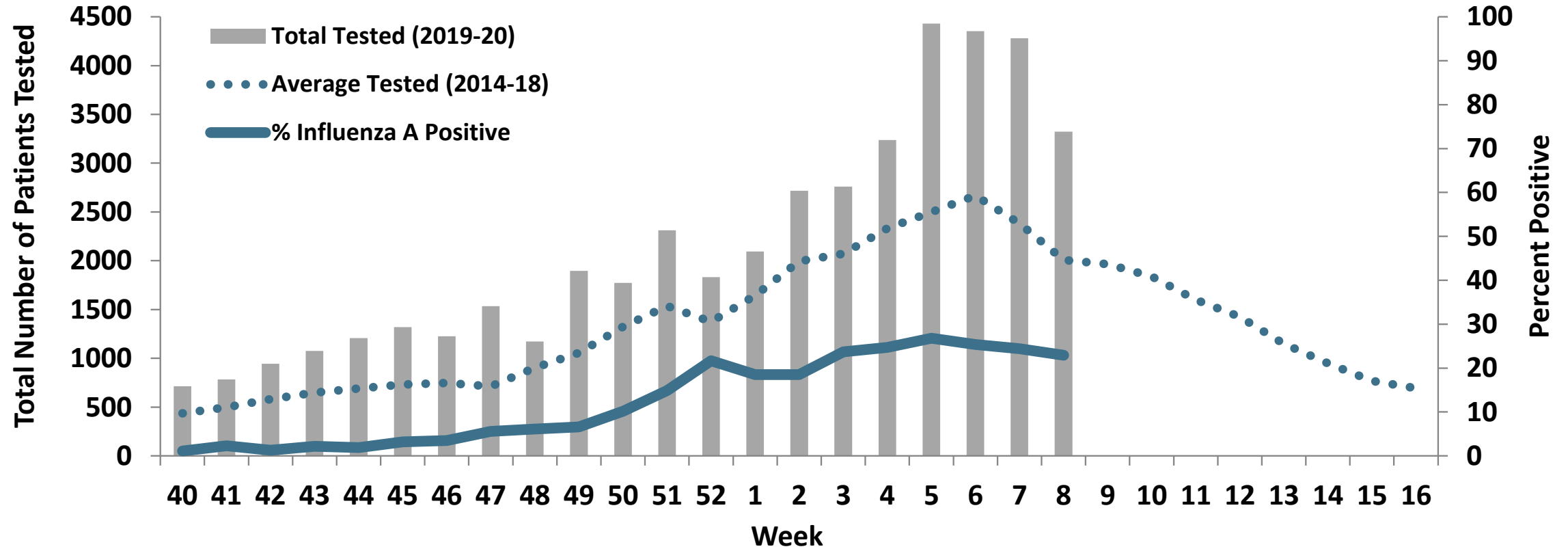




## Influenza Positive Tests Reported to CDC by U.S. Public Health Laboratories, National Summary, 2019-2020 Season



### Proportion of Positive Influenza A Specimens for U.S. Army 2019-2020



## Laboratory Respiratory Specimen Testing: Weeks 5 – 8

		Week 5	Week 6	Week 7	Week 8	Season Total
Test Types Among Positive Influenza A Specimens	RAT	790	808	826	605	4929
	Culture	26	7	5	2	111
	PCR	372	289	215	153	2778

Army MTF Laboratory Results, 2019-20	Influenza A	1188	1104	1046	760	7818
	Influenza B	535	456	397	275	5519
	Adenovirus	19	11	8	6	218
	Enterovirus	0	0	0	0	7
	Parainfluenza	6	2	2	0	210
	RSV	85	66	64	37	1555
	Negative	6101	5846	5768	4627	75315
	<b>Total</b>	<b>7934</b>	<b>7485</b>	<b>7285</b>	<b>5705</b>	<b>90642</b>

**Number of Positive Influenza A Specimens by Duty Status and Public Health Command**

Region	Week 1		Week 2		Week 3		Week 4		Week 5		Week 6		Week 7		Week 8	
	AD	Non-AD	AD	Non-AD	AD	Non-AD	AD	Non-AD	AD	Non-AD	AD	Non-AD	AD	Non-AD	AD	Non-AD
<b>PHC-A</b>	29	129	44	119	49	189	64	245	201	407	198	362	145	412	97	228
<b>PHC-C</b>	25	147	74	165	73	232	85	282	102	352	122	340	88	335	74	311
<b>PHC-E</b>	3	3	7	10	9	14	9	8	16	23	6	17	7	14	1	2
<b>PHC-P</b>	14	37	54	30	49	38	51	55	32	55	16	41	6	39	14	33
<b>CENTCOM</b>	-	-	-	-	-	-	-	-	-	-	2	-	-	-	-	-